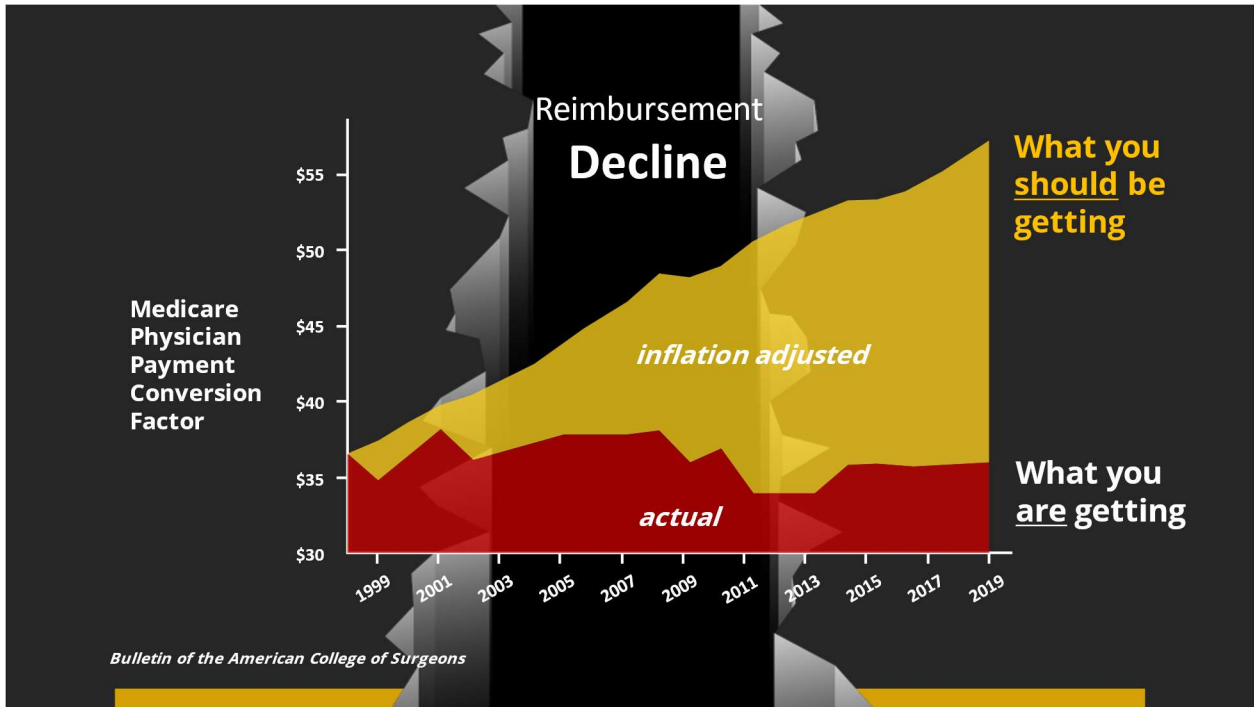


white glove
PRACTICE

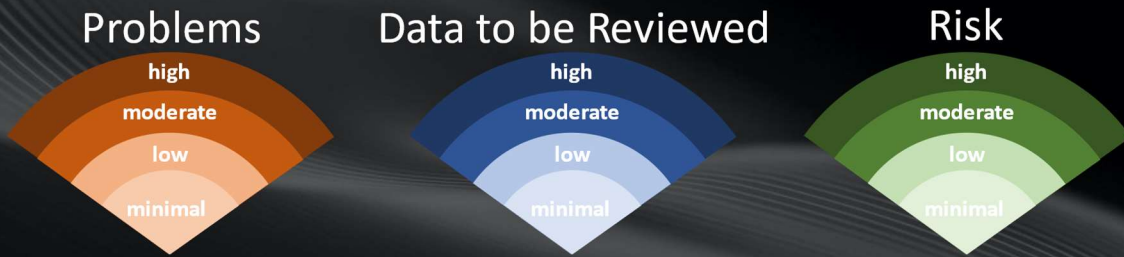
Rev Cycle Trends for Orthopaedic Leaders





Notes

2021 E&M MDM Table



Notes

Advanced Revenue Cycle Analytics

Prepared Exclusively For

Sample Practice

Charges Completed:
12/7/2020 – 1/22/2021

Total Encounters: 6,615



WHITE PLUME

For additional information,
please contact Matthew Menendez
mmenendez@whiteplume.com

WHITE PLUME

REVENUE LEAKAGE AVOIDANCE:

THE AMOUNT OF REVENUE YOUR CODING TEAM CAPTURES BEHIND CLINICAL STAFF.

Amount of Revenue Leakage Avoidance Before White Glove:

Revenue Leakage Avoidance

Revenue Captured per Encounter:

\$0.48

Revenue Captured per Encounter - This is how much your coding staff captures per encounter on average.

Revenue Captured per Year:

\$12,164.72

Revenue Captured per Year - If your coding team continues at the same rate, they will capture this much additional revenue per year.

Amount of Revenue Leakage Avoidance After White Glove:

Revenue Leakage Avoidance

Revenue Captured per Encounter:

\$5.07

Revenue Captured per Encounter - This is how much your coding staff captures per encounter on average.

Revenue Captured per Year:

\$265,885.30

Revenue Captured per Year - If your coding team continues at the same rate, they will capture this much additional revenue per year.

Before using White Glove, this client captured \$0.48 of additional revenue per encounter behind their providers. After 6 months of White Glove, they capture \$5.07 of additional revenue per encounter behind their providers. This equates to an additional \$253,720 in revenue annually.





Productivity By User

Batch Assembled by	Average Encounters per Hour ¹	Number of Batches	Average Encounters per Batch	Total Encounters	Encounter Change Rate	Days to Mark Complete	Days of Service to Transmission	Hours Batched to Transmission ²	% of Encounters Completed Same Day ³
user 1	28.09	17	114.4	1,945	86.17%	0.06	1.80	3:49	88%
user 2	57.88	243	17.9	4,359	26.82%	0.88	2.40	0:18	98%
user 3	48.21	14	22.2	311	23.15%	1.15	3.70	0:29	98%
Practice Average	48.67	91	52	2,205	44.10%	0.70	2.6	1:32:22	94.67%

WHITE PLUME Accela SMART AVERAGES		
	Average Encounters per Hour	% of Changed Encounters
Average White Plume Client	223	53%
Revenue Cycle Ninja	105	

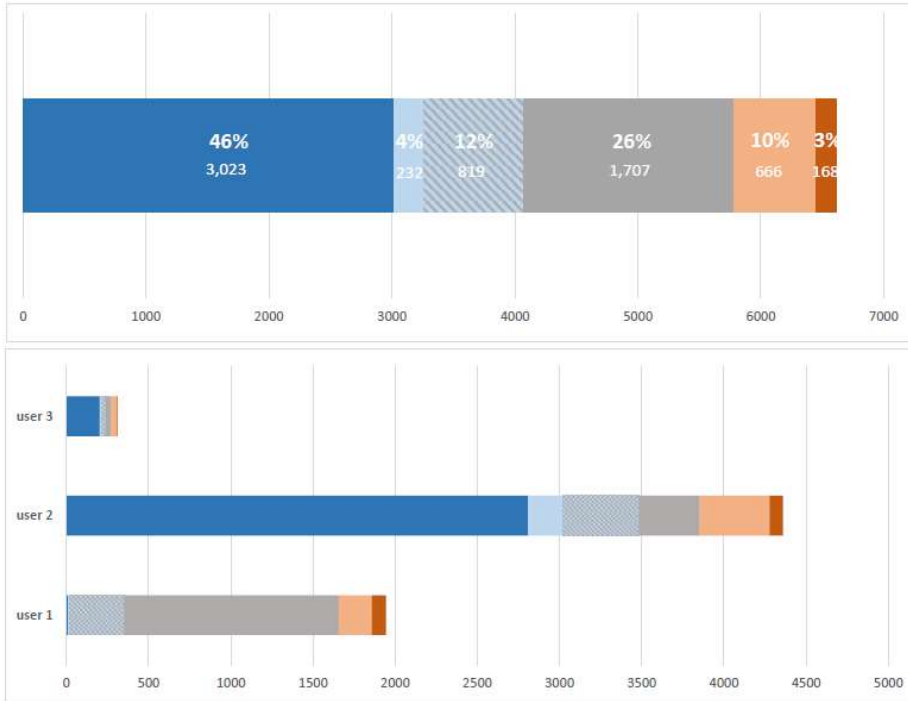
¹ Average Encounters per Hour is the number of encounters processed per hour for batches completed in the same day, weighted by batch size.

² The Hours Batched to Transmission only shows times for the encounters that were batched and transmitted within the same day. The timing for encounters that are assembled on one day and completed another day are not included in this calculation.

³ % of Encounters Completed Same Day only accounts for encounters batched and transmitted within the same day. Encounters that are batched on one day and completed on another day are not included in this percentage.



Validation Overview



Clean Encounters - Encounters where no validation edits fired
Automated Changes - Encounters that were only changed with automation

Auto + User Changes - Encounters that were changed by both automation and validation messages that were corrected

Corrected Edits - Encounters with validation messages that were corrected

False Positives - Encounters with ignored validation messages

Unprompted Changes - Encounters without validation messages that the user changed

Top 10 Diagnosis Additions/Deletions

Overall Diagnosis Changes

ADDITIONS		
ICD-10 Code	ICD-10 Description	Total
M25.532	Pain in left wrist	11
M17.0	Bilateral primary osteoarthritis of knee	10
M25.512	Pain in left shoulder	10
Z96.641	Presence of right artificial hip joint	10
G57.02	Lesion of sciatic nerve, left lower limb	10
M25.561	Pain in right knee	10
M79.644	Pain in right finger(s)	8
M25.551	Pain in right hip	7
M25.571	Pain in right ankle and joints of right foot	7
M54.42	Lumbago with sciatica, left side	7

DELETIONS		
ICD-10 Code	ICD-10 Description	Total
M25.562	Pain in left knee	31
M25.512	Pain in left shoulder	21
M25.561	Pain in right knee	16
M17.12	Unilateral primary osteoarthritis, left knee	16
M25.531	Pain in right wrist	12
M25.511	Pain in right shoulder	12
M54.5	Low back pain	11
M25.572	Pain in left ankle and joints of left foot	11
M25.541	Pain in joints of right hand	11
M25.532	Pain in left wrist	9

Corrected Edits Diagnosis Changes

ADDITIONS		
ICD-10 Code	ICD-10 Description	Total
M25.532	Pain in left wrist	11
G57.02	Lesion of sciatic nerve, left lower limb	10
Z96.641	Presence of right artificial hip joint	10
M17.0	Bilateral primary osteoarthritis of knee	10
M25.512	Pain in left shoulder	10
M25.561	Pain in right knee	10
M65.341	Trigger finger, right ring finger	9
M25.572	Pain in left ankle and joints of left foot	8
M79.644	Pain in right finger(s)	8
M17.11	Unilateral primary osteoarthritis, right knee	7

DELETIONS		
ICD-10 Code	ICD-10 Description	Total
M25.562	Pain in left knee	40
M25.561	Pain in right knee	33
M25.511	Pain in right shoulder	26
M25.512	Pain in left shoulder	21
M25.531	Pain in right wrist	19
M25.541	Pain in joints of right hand	15
M54.5	Low back pain	11
M25.572	Pain in left ankle and joints of left foot	11
M25.532	Pain in left wrist	11
M25.542	Pain in joints of left hand	9

Unprompted Diagnosis Changes

ADDITIONS		
ICD-10 Code	ICD-10 Description	Total
M65.862	Other synovitis and tenosynovitis, left lower leg	5
M25.462	Effusion, left knee	3
-	-	-
-	-	-
-	-	-
-	-	-
-	-	-
-	-	-
-	-	-
-	-	-

DELETIONS		
ICD-10 Code	ICD-10 Description	Total
M17.12	Unilateral primary osteoarthritis, left knee	9
M25.512	Pain in left shoulder	6
M19.012	Primary osteoarthritis, left shoulder	5
M25.562	Pain in left knee	4
M75.52	Bursitis of left shoulder	3
S43.422A	Sprain of left rotator cuff capsule, initial encounter	2
Z96.642	Presence of left artificial hip joint	2
M25.462	Effusion, left knee	2
M75.02	Adhesive capsulitis of left shoulder	2
m67.02	Short Achilles tendon (acquired), left ankle	1



Top 10 Procedure Additions/Deletions

Overall Procedure Changes

ADDITIONS	
CPT Code	Total
J3301	269
20550	135
20610	132
99072	123
J1100	106
20605	29
73562	27
20611	25
20526	22
Q4022	22

DELETIONS	
CPT Code	Total
S9088	288
99072	249
20550-RT	67
20610-RT	66
20550-LT	63
20610-LT	50
76881	20
20605-RT	15
L4387	12
20605-LT	12

Automation Procedure Changes

ADDITIONS	
CPT Code	Total
J3301	286
20610	139
J1100	133
20550	130
20605	28
73562	27
20526	24
Q4022	22
Q4049	20
Q4010	17

DELETIONS	
CPT Code	Total
20550-RT	67
20610-RT	66
20550-LT	63
20610-LT	50
20605-RT	15
20605-LT	12
20526-LT	8
20526-RT	8
20611-LT	7
20611-RT	6

Corrected Edits Procedure Changes

ADDITIONS	
CPT Code	Total
99072	120
L3660	11
J3301	10
20611	10
S9088	7
L1820	7
L1902	7
L3908	7
L4386	6
20610	5

DELETIONS	
CPT Code	Total
S9088	281
99072	242
J3301	28
J1100	27
76881	20
20610	14
L4387	12
A4565	10
L4350	6
L1833	6

Unprompted Procedure Changes

ADDITIONS	
CPT Code	Total
99072	3
S9088	1
-	-
-	-
-	-
-	-
-	-
-	-
-	-
-	-
-	-
-	-
-	-
-	-
-	-
-	-

DELETIONS	
CPT Code	Total
99072	7
S9088	7
-	-
-	-
-	-
-	-
-	-
-	-
-	-
-	-
-	-
-	-
-	-
-	-
-	-
-	-



Unprompted Changes by User

User	Total Unprompted Change By User	% of Total
user 1	118	52%
Mod Deletion	74	32%
Procedure Deletion	14	6%
Other Proc Change	13	6%
Dx Deletion	8	4%
Procedure Addition	4	2%
Dx Addition	2	1%
Other Dx Change	2	1%
Provider Code	1	0%
user 2	108	47%
Dx Deletion	48	21%
Mod Addition	20	9%
Other Proc Change	18	8%
Location Code	16	7%
Dx Addition	6	3%
user 3	2	1%
Location Code	1	0%
Dx Deletion	1	0%
Grand Total	228	100%